



Galaxy One

A Project by Galaxy Housing Pvt Ltd

Introduction

A world-class project like **Galaxy One** is certain to become one of Lahore's most popular vertical developments launched in recent times - thanks to its remarkable location and scope. Residents of this beautiful building will benefit from a number of contemporary facilities in a safe environment.

Galaxy One is a carefully planned residential and commercial development that offers a high standard of living.

It is prepared to adorn Pine Avenue Road and Khayaban-e-Amin with its stunning classic architecture. It is a promising endeavour by Galaxy Housing in the high-rise community of Lahore.

Galaxy One by Galaxy Housing Pvt Ltd



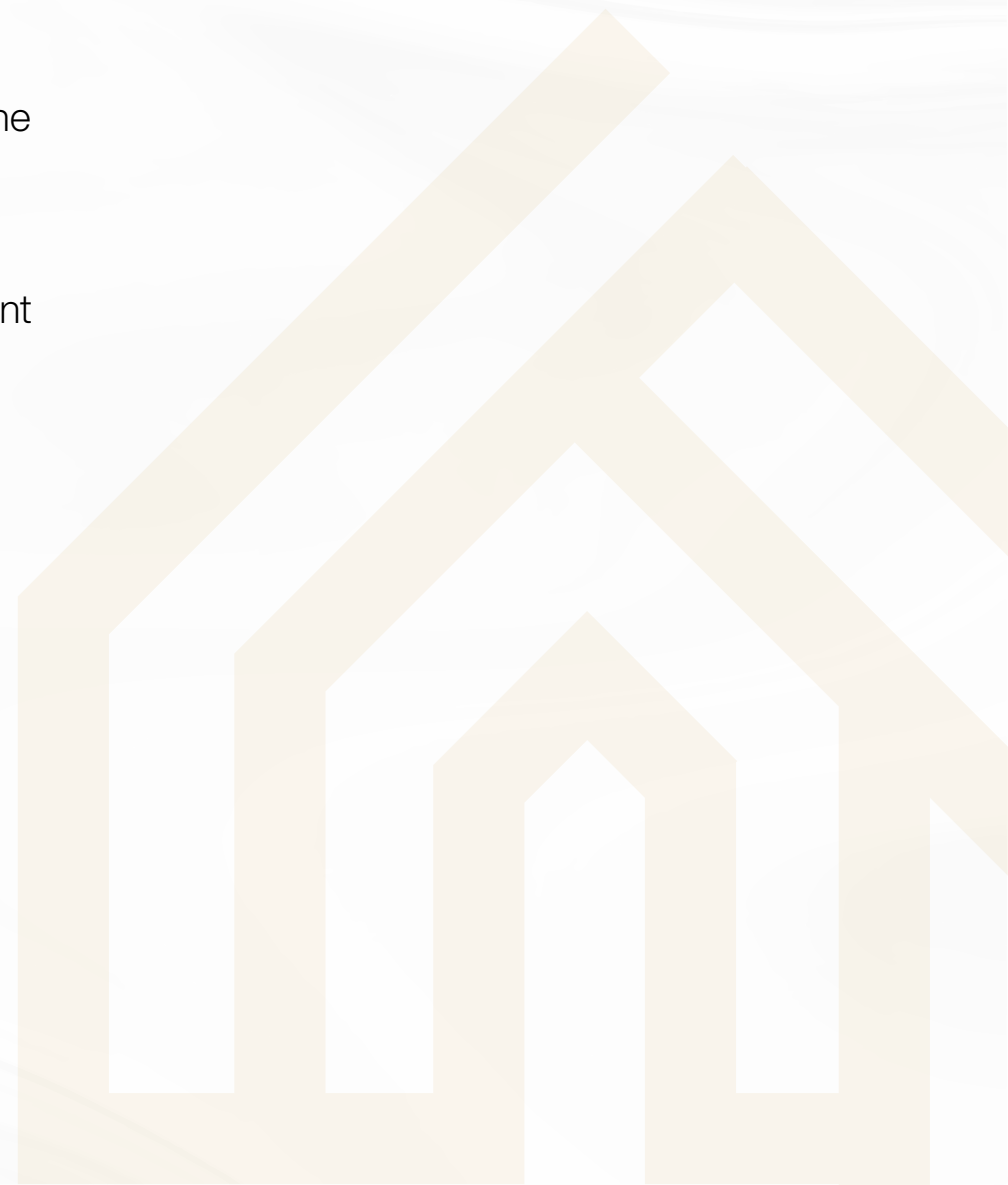


Project Highlights

Galaxy One by Galaxy Housing Pvt Ltd

Galaxy One Apartments are being constructed to cater the ever increasing urban sprawl of Lahore, while providing an opulent lifestyle of peace, luxury and affordability. The finest engineering and architectural techniques are being applied in the construction of this project. Galaxy One by Galaxy Housing is a state of the art development which seeks to establish a strong precedent of contemporary urban living in Lahore based on the following aspects:

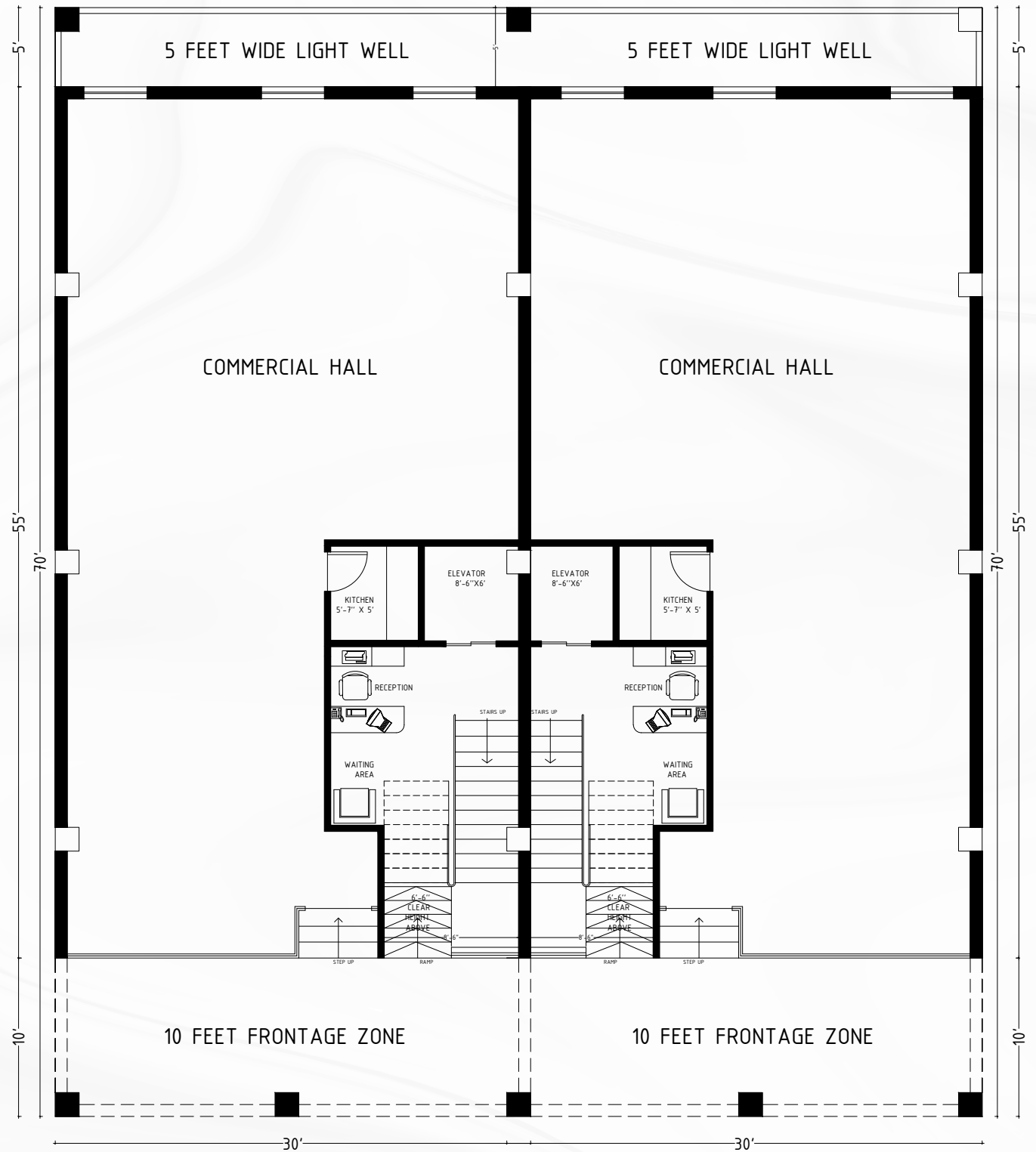
- A stunning high-rise complex featuring residential and commercial spaces, situated on the prime Pine Avenue Road.
- A project with exceptionally high investment potential that has received LDA Approval.
- Offers the most affordable residential apartments and commercial outlets in the vicinity.
- A residential and commercial complex with stunning victorian exterior which will augment the beauty of its surroundings.
- Provides the best opulent living in the form of 1 & 2 Bed Luxury Apartments.
- Amenities and comforts of international standards available within your reach.



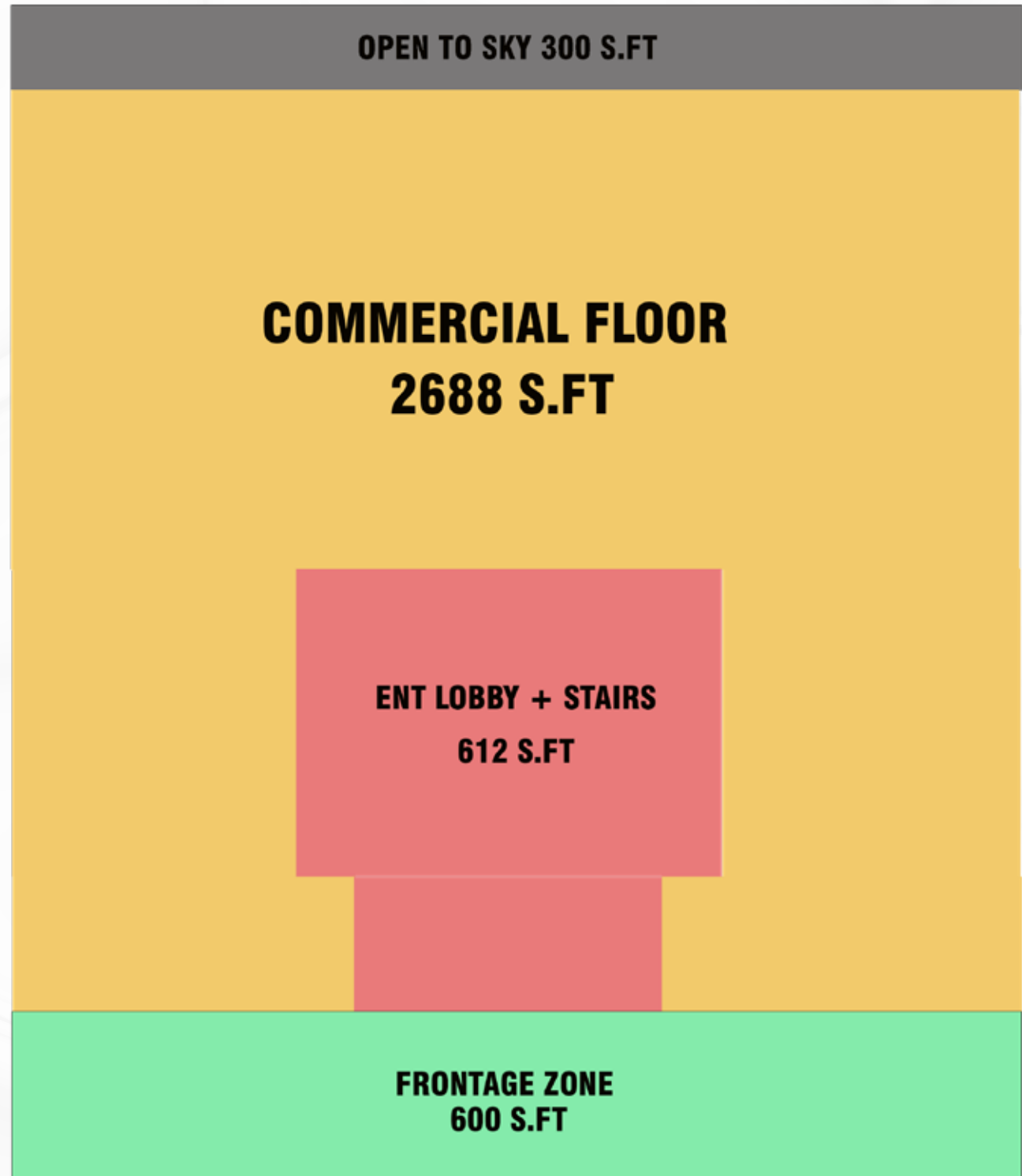




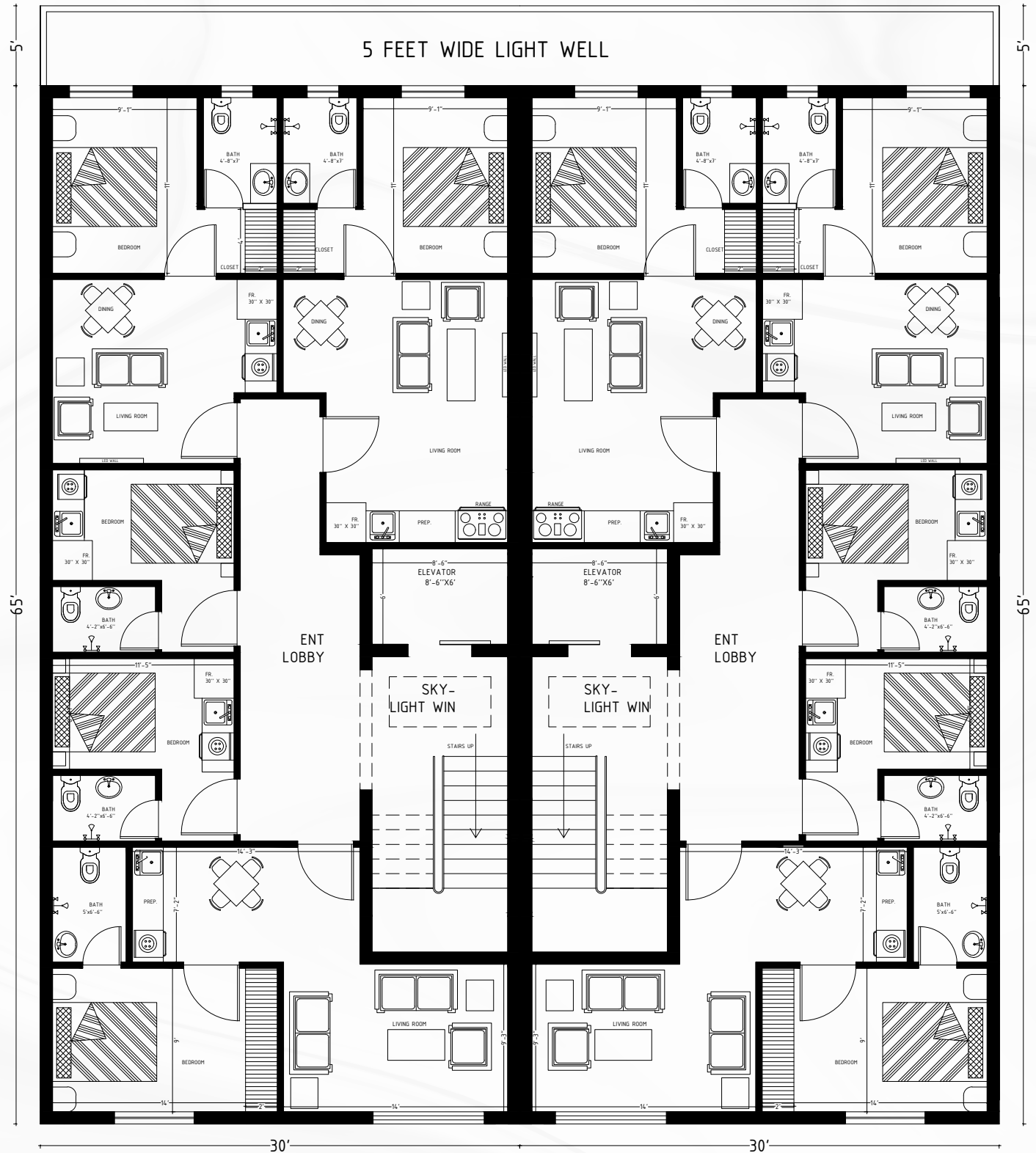
Ground Floor Plan



Schedule of Areas Ground Floor

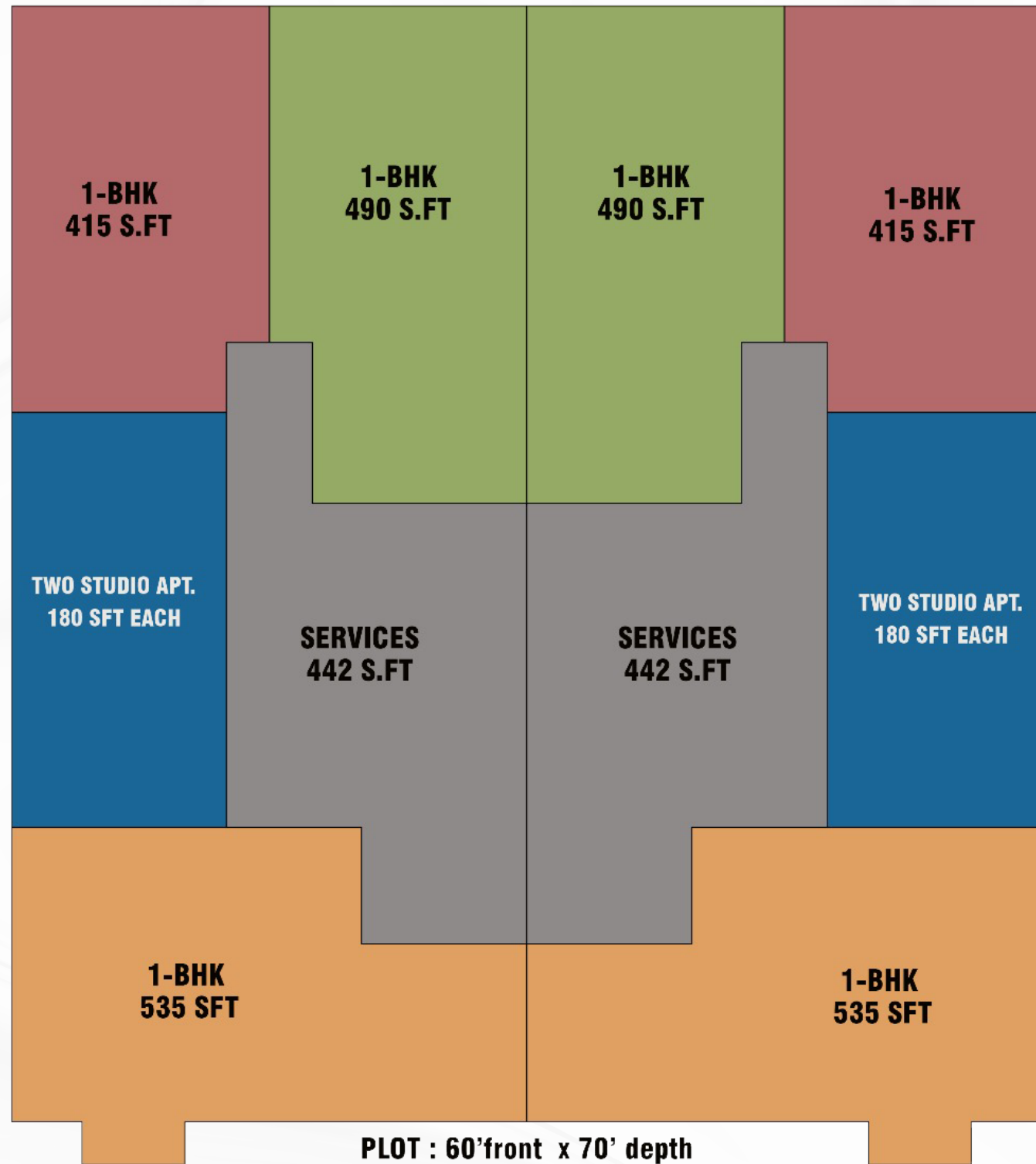


Floor Plan

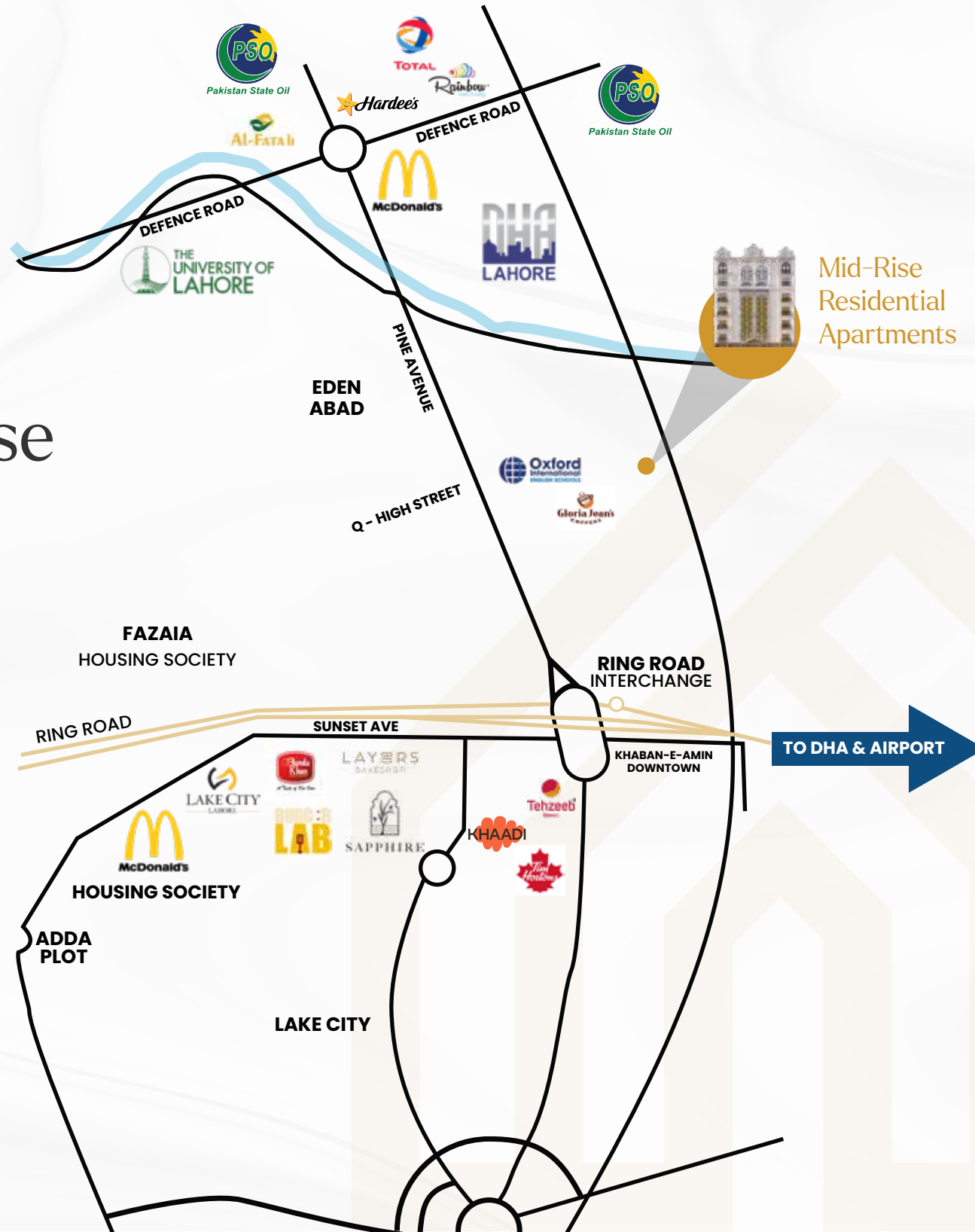


Schedule of Areas Floor Plan

SCHEDULE OF GROSS AREAS



Relative Location of Mid-Rise Residential Apartments



Location of Mid-Rise Residential Apartments

02
minutes

Lake City
Mall

01
minute

Ring
Road

08
minutes

Ferozpur
Road

10
minutes

Motorway

12
minutes

Shaukat
Khanum

15
minutes

DHA

20
minutes

Airport

Amenities

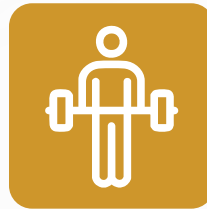
Earthquake
Resistance



Play
Area



Gymnasium



Housekeeping



Online
Management Team



Ample
Parking Space



24/7
Camera Security



High
Speed Elevators



Free
Healthcare



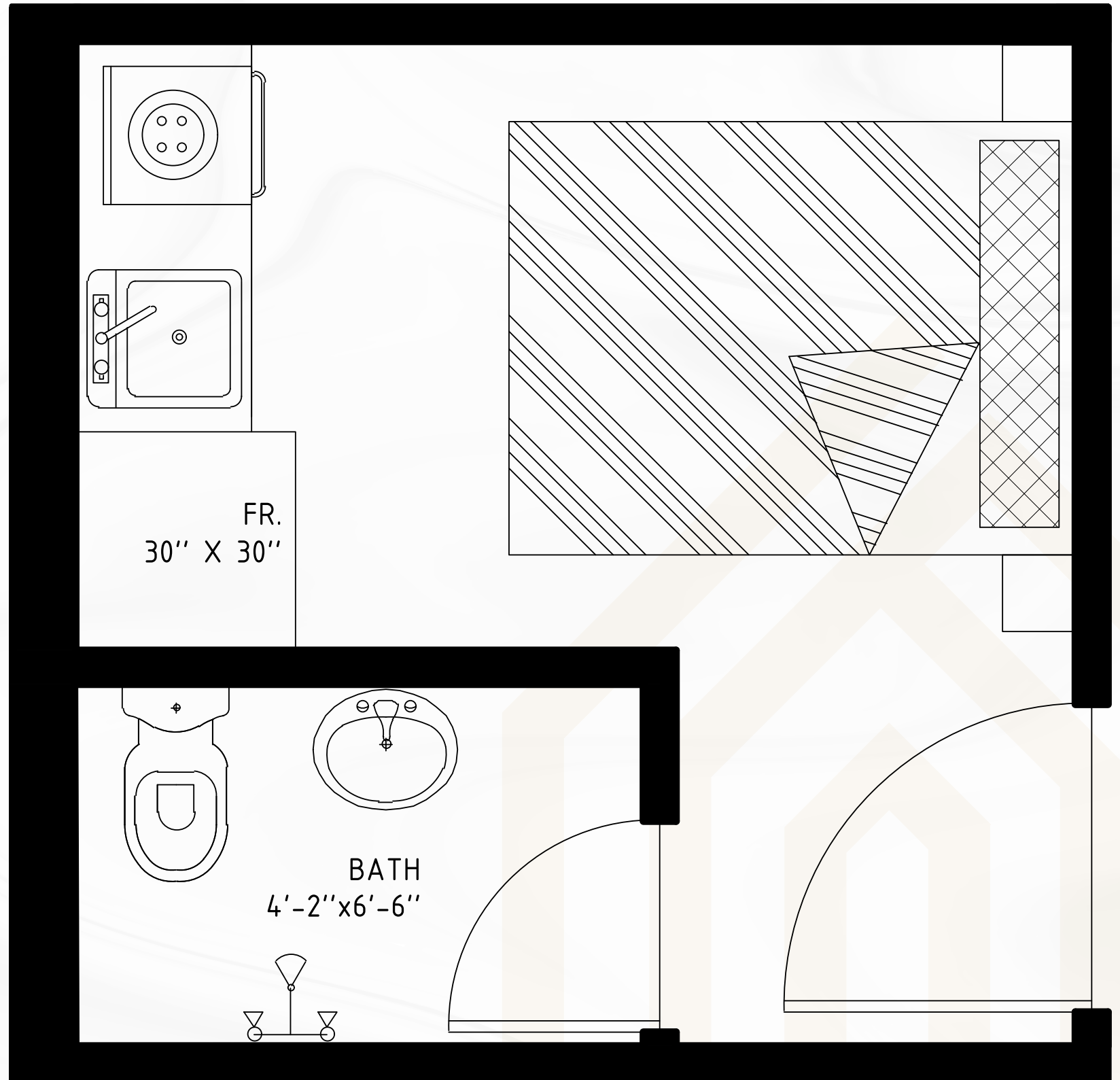
Laundry
Room



1BHK Plan



Studio Apartment



Interior Design



Interior Design



Interior Design



Interior Design



Interior Design



Interior Design



PAYMENT PLAN FOR RESIDENTIAL FLOOR

| TYPE | AREA | RATE PER SQ.FT | TOTEL PRICE | DOWN PAYMENT | 36 MONTHLY INSTALLMENT | AFTER FOUR MONTHS BALLOON PAYMENTS | ON POSSESSION |
|---------|-----------|----------------|-------------|--------------|------------------------|------------------------------------|---------------|
| STUDIO | 180 SQ.FT | 16000/- | 2880000/- | 720000/- | 27625/- | 74000/- | 500000/- |
| ONE BED | 415 SQ.FT | 16000/- | 6648000/- | 1200000/- | 68000/- | 200000/- | 1208000/- |
| ONE BED | 490 SQ.FT | 16000/- | 7848000/- | 1200000/- | 68000/- | 300000/- | 1508000/- |
| ONE BED | 535 SQ.FT | 16000/- | 8568000/- | 1200000/- | 68000/- | 380000/- | 1508000/- |

OFFICES STARTING FROM 20000 RUPEES PER SQFT


Contact

 +92 313 4615 808

Website

 www.galaxyhousingpvt.com

Email

 info@galaxyhousingpvt.com

Head Office

 1/12 CC, C Block Khayaban-e-Amin

LDA Avenue 1 office

 129 J Block, Main Boulevard
LDA Avenue 1

Site Office

 1/11 CC, Block C, Khayaban-e-Amin
Pine Avenue Road Lahore